

SCALE IN 1/10 OF AN INCH

135-03

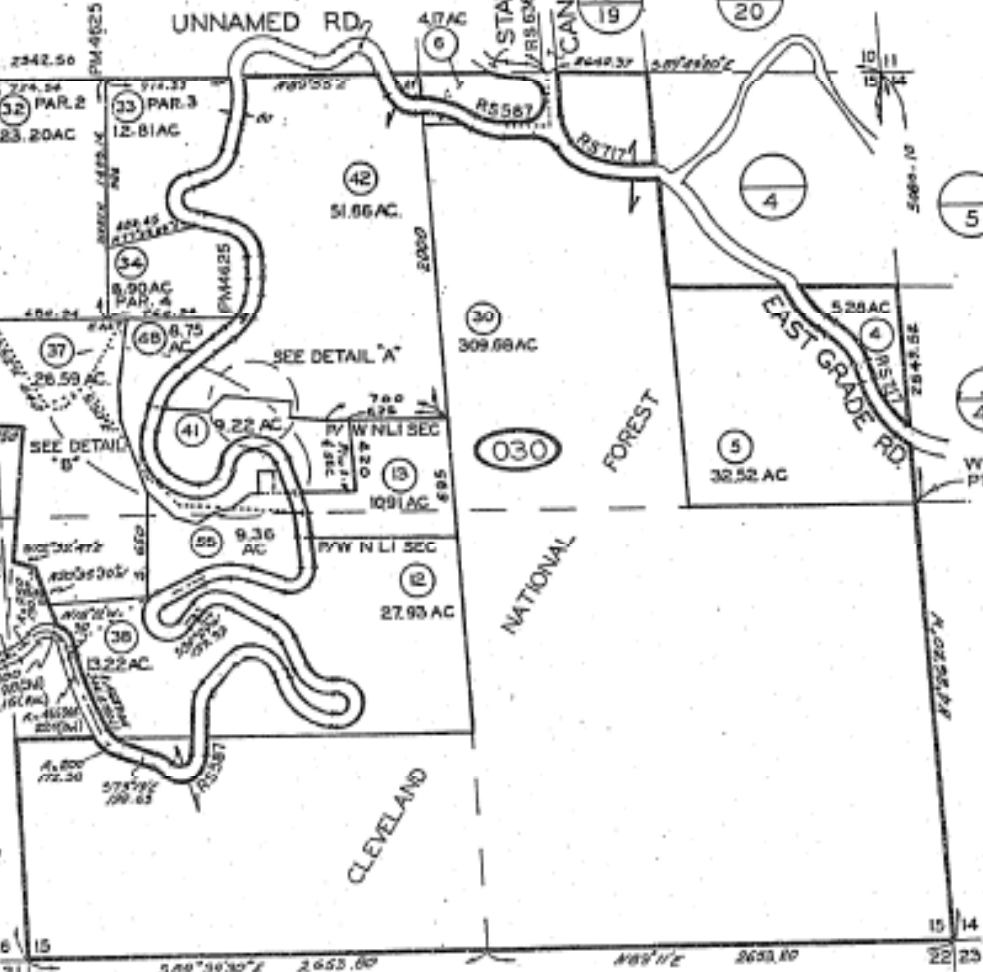
DETAIL "B"  
1" = 400'

DETAIL "A"  
1" = 200'

134  
13  
SHT. 1

134  
19

134  
20



4-1-97

BLK	OLD	NEW	CUT
17	29	31	74 13/15
27	28-34	77	1238
22	26	36,38	78 10/16
22	28	32,30	78 10/17
8		37,40	78 10/18
11	29	41,42	78 12/28
35		43,44	78 4/142
43	44	45	81 28/28
45		46,47	82 88/7
36	47	48-50	83 19/54
49	50	51	85 25/92
51		52-54	86 25/71
4	57	58	88 84/77
57	58	59	89 19/68
4 & 5		59	87 28/80

SEC 15 - T10S - R1E - P0R  
ROS 14782

APR 1 0 19

THIS MAP WAS PREPARED FOR ASSESSMENT PURPOSES ONLY. NO LIABILITY IS ASSUMED FOR THE ACCURACY OF THE DATA SHOWN. ASSESSOR'S PARCELS MAY NOT COMPLY WITH LOCAL SUBDIVISION OR BUILDING ORDINANCES.